



SPEAKER ADAPTERS*

PACLR1™ Left/Right Speaker Adapter

- Fully assembled
- Low profile
- Expandable for 30 - 50" flat panels
- Compatible with 8" (200 mm) and 14" (356 mm) Q-Latch patterns



PAC302™ Center Speaker Shelf

- Interfaces with Chief's Q-Latch Mounting System
- Includes 5" (127 mm) of height adjustment for different size speakers
- Can also be used as a component shelf
- Compatible with 30 - 50" flat panels



PACY3™ Yamaha Center Speaker Adapter

- Compatible with YAMAHA YSP-800, YSP-1000/YSP-1, YSP-900, YSP-3000, YSP-30D, YSP-3050, HTY7030, YSP-4000, YSP-40D, HTY-7040
- Compatible with 14" (356 mm) Q-Latch patterns
- Height adjustable for a flush installation

YSM2™ Yamaha Wall Mount

- Compatible with YAMAHA YSP-1100, YSP-800, YSP-1000, YSP-1
- Low profile wall mount installation
- Provides room for outlet placement



PACCC1™ Center Channel Speaker Adapter

- Fully assembled
- Low profile
- Expandable for 30 - 50" flat panels
- Compatible with 8" (200 mm) and 14" (356 mm) Q-Latch patterns



* Also see FUSION accessories (page 87) and Carts and Stands accessories (pages 88-89)

MEDIA ADAPTERS*

MAC251™ CPU/DVD/VCR Universal Adapter

- Adapts to 8" (200 mm) Q-Latch pattern
- Allows easy access to drives and input/output connections
- Compatible with media devices up to: (WxD) 13.75 x 3.88" (349 x 99 mm)



PAC251™ CPU/DVD/VCR Universal Adapter

- Adapts to 14" (356 mm) Q-Latch pattern
- Allows easy access to drives and input/output connections
- Compatible with media devices up to: (HxWxD) 17.63 x 15.5 x 3.5" (448 x 394 x 89 mm)



PAC252™ CPU Universal Adapter

- Adapts to 14" (356 mm) Q-Latch pattern
- Allows easy access to drives and input/output connections
- Compatible with media devices up to: (HxWxD) 16 x 14.5 x 4.5" (406 x 368 x 114 mm)



MWC™ Medium Tilt Mount with Media Player Storage

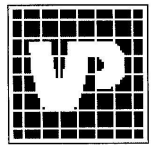
- Complete solution designed to easily integrate a media player into a flat panel installation
- Lockable tilt at 0°, 5°, 10°, 15°
- 8" (200 mm) Q-Latch installation
- Compatible with media devices up to: (WxD) 18.81 x 3.81" (478 x 97 mm)



PWC™ Large Tilt Mount with Media Player Storage

- Complete solution designed to easily integrate a media player into a flat panel installation
- Lockable tilt at 0°, 5°, 10°, 15°
- 14" (356 mm) Q-Latch installation
- Compatible with media devices up to: (WxD) 18.81 x 3.81" (478 x 97 mm)





PRE-INSTALLATION POWER BOXES

PAC510™ Flat Panel Retro-Fit In-Wall Box

- Retro-fit installation design
- Installs between 16" centers
- Capacity for up to four plastic retro-fit, single gang junction boxes and conduit, surge protectors and excess cable



PAC515™ Flat Panel Pre-Installation In-Wall Box

- New construction or retro-fit installation design
- Installs between 16" centers
- Capacity for up to four plastic retrofit, single gang junction boxes and conduit, surge protectors and excess cable



PAC520™ Flat Panel Pre-Installation In-Wall Box

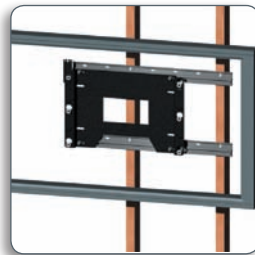
- New construction or retro-fit installation design
- Installs horizontally between 16" centers or vertically on a single stud
- Capacity for up to four plastic retrofit, single gang junction boxes and excess cables



LATERAL SHIFT ADAPTERS

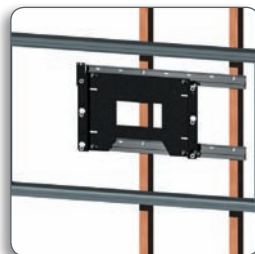
PAC125™ Lateral Shift

- All hardware included
- Provides additional lateral shift for fixed and tilt wall mounts
- Includes two 28" (711 mm) extrusions



PAC126™ Lateral Shift

- Provides additional lateral shift for fixed and tilt wall mounts and spans three studs
- All hardware included
- Includes two 36" (914 mm) extrusions



ENS™ Lateral Shift Extrusion for Video Walls

- Custom length lateral shift extrusion up to 108" (274 cm)
- Great solution for horizontally tiled flat panel installations
- ENSHW™ Hardware Kit (order separately)



IN-WALL ACCESSORIES

PAC501™ Large In-Wall Swing Arm Box

- Designed to integrate an in-wall swing arm for a flush installation
- Compatible with PNRIW, PWRIW, MWRIW



PACHFK1™ Header/Footer Kit for PAC501

- Easily installs between three 16" center studs with center stud removed
- Reduces PAC501 installation time
- Provides a solid support structure, eliminating the need to frame around the PAC501 with 2x4 studs
- Provides clearance holes for the knockouts to simplify electrical wiring



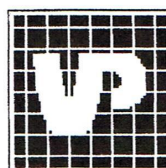
MAC501™ Medium In-Wall Swing Arm Box (shown with JWDIW™)

- Designed to integrate an in-wall swing arm for a flush installation
- Installs between 16" center stud system
- Compatible with JWDIW



FAC501™ Small In-Wall Swing Arm Box (shown with FWDIW™)

- Designed to integrate an in-wall swing arm for a flush installation
- Installs between 16" center stud system
- Compatible with FWDIW

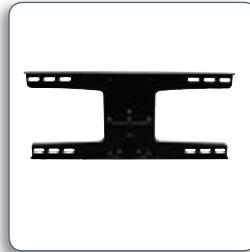




STEEL STUD ADAPTERS

MAC118™ Medium Swing Arm Steel Stud Adapter

- Retro-fit installation design
- Installs on 16"/20"/24" centers
- Capacity for up to four single gang junction boxes and conduit, surge protectors and excess cables
- Provides room for outlet placement
- Compatible with JWS and JWD



MAC119™ Large Swing Arm Steel Stud Adapter

- Compatible with MWR and PWR products
- Attaches directly to 16"/20"/24" center steel studs
- Includes all mounting hardware
- Low profile - only adds 0.13" (3 mm) to installation depth



PAC115™/PAC116™/PAC117™ Fixed & Tilt Wall Mount Steel Stud/Drywall Anchor Kit

- Kit includes (4, 6, or 25) heavy-duty toggle anchors; quantity coincides with part number
- Drywall must be a minimum of 0.5" (13 mm)
- Max Load: 175 lbs (79.3 kg)



SPECIALTY ADAPTERS

PAC390™ Cube System Adapter

- Compatible with medium and large fixed and tilt wall mounts.
- Quickly adapts office wall system with adjustable depth up to 3.81" (97 mm)
- Holds up to 175 lbs (79.3 kg)



PAC391™ Slat Wall Adapter

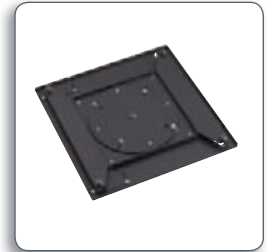
- Allows Chief's RMF1, RMT1, RLF1 or RLT1 fixed and tilt mounts to be installed on office furniture slat wall extrusion.
- Universal, adjusts to fit to most slat wall or tool tile office furniture structures



PAC400™/MAC400™

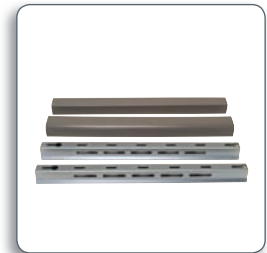
90° Rotation Adapter

- Provides fingertip flat panel rotation from landscape to portrait mode
- PAC400 is compatible with Chief 14" (356 mm) Q-Latch pattern
- MAC400 is compatible with Chief 8" (200 mm) Q-Latch pattern
- Low profile - Only 1.06" (26.9 mm) added depth



PAC124™ 24" Stud Adapter

- Designed to adapt to MWH/MWR/PWR/PNR/PDR swing arms to allow for 24" (609 mm) center stud installation
- Kit includes 26" (660 mm) wall extrusions and aesthetic covers



POWER MANAGEMENT ACCESSORIES

PX2W™ Power Outlet Conditioner

- Replaces the need for an outlet
- Provides AC cleaning without loss of power



PAC521P™ Power-Infused Pre-install Box

- Replaces the need for an outlet
- Provides AC cleaning without loss of power
- Power conditioner is invisible and recessed into the in-wall box
- Provides an organized, recessed space for excess cables



PACPC1™ Power Filter Kit

- Complete kit for easy integration with: Wall Mounts, 1-1/2" NPT Extension Columns, Pre-Installation Boxes and In-Wall Swing Arm Boxes
- Noise filtering for a crystal clear signal
- Surge protection (1890 Joule Rating)
- Automatic shutoff for over voltage protection
- Includes two outlets and a 24" (609 mm) power cord



Visual Planning Corporation
 Montreal-Ottawa-Mississauga-Vancouver
 Tel: 888-884-5444 and 800-361-1192
 E-mail: ottawa@visualplanning.com or
info@visualplanning.com





ACCESSORY SHELVES*

PAC101™ Shelf for Single Stud Wall Installations

- Dimensions (HxWxD): 2.18" x 14" x 10.4" (55 x 356 x 264 mm)
- Weight Capacity: 20 lbs (9.1 kg)
- All mounting hardware included



PAC102™ Shelf for Pole Installations

- Dimensions (HxWxD): 2.18" x 14" x 10.4" (55 x 356 x 264 mm)
- Weight Capacity: 20 lbs (9.1 kg)
- All mounting hardware included for 1-1/2" NPT installation



PAC103™ Equipment Safety Strap

- Compatible with PAC101 and PAC102 Shelf
- Adjustable strap provides added security for components



AUTOMATED INTERFACE ADAPTERS

CM7AC1™ 200 x 200 mm Adapter

- CM7 Adapter designed to allow for 200 x 200 mm compatibility
- Connects directly to existing hardware

CM7AC2™ XL Adapter

- CM7 Adapter designed to allow for TV hole patterns greater than the supplied universal interface
- Connects directly to existing hardware

AUTOMATED CONTROL ACCESSORIES

IR10™ Infrared Remote Control

- Can be used to control the SL151, SL236, CM1W18, CM2C40, and CM2L40



RC10™ RF Remote Control

- Can be used to control the SL151, SL236, CM2L40 and CM2C40



ASP401™ Individual Control System

- Allows up/down intermediate break by rocker switch



AUTOMATED INSTALLATION ACCESSORIES

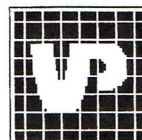
SS10™ Pressure-Sensitive Safety Strip

- Use with ST15 Terminals to provide added safety mechanism to lift products

ST15™ 5" Safety Strip Terminals

- Use with SS10 Pressure-Sensitive Safety Strip to provide added safety mechanism to lift products

* Also see FUSION accessories (page 87) and Carts and Stands accessories (pages 88-89)





FUSION ACCESSORIES

FLR100™ FUSION Left/Right Speaker Adapter

- Compatible with any new FUSION fixed or tilt wall mount
- Infinitely adjustable to fit speakers flush with side of TV
- Adds zero depth to installation



FCC100™ FUSION Center Channel Speaker Adapter

- Compatible with any new FUSION fixed or tilt Wall mount
- Infinitely adjustable to fit speakers flush with bottom of TV
- Adds zero depth to installation



FCA100™ FUSION CAT5/Surge/CPU Adapter

- Holds CAT5 boxes, surge protectors / small CPUs or Chief's PACPC1 Power Filter behind any FUSION mount
- Adds zero depth to installation



FCA102™ FUSION Secure CPU/Media Player Accessory

- Universal adapter fits CPUs up to 1.63" (41 mm) thick behind new FUSION mounts
- Recommended to be used with Large and XL FUSION mounts.
- Adds zero depth to installation



FCK008™/FCK016™ FUSION Connector Kits

- 8" or 16" (203 mm or 406 mm) connector kits to connect two FUSION mounts together for a multi-monitor installation
- FCK008 recommended when installing 37-42" screen on L-series FUSION fixed or tilt mounts, all other configurations should use FCK016
- Must be ordered when using FVS300 or FVS350 In Line Camera Shelves
- Adds zero depth to installation



FCS100™

FUSION Component Shelf - Below

- Compatible with any new FUSION mount
- Shelf sits below TV to hold any AV component
- Adds zero depth to installation



FCD100™

Additional FUSION Component Shelf - Below

- Extra shelf sits below an existing FUSION component or camera shelf or FCC100 center channel accessory
- Must order component or camera shelf or center channel accessory separately
- Adds zero depth to installation



FVS100™/FVS150™

FUSION Camera Shelf - Below

- 8" or 12" (203 mm or 305 mm) wide camera shelf
- Compatible with any new FUSION fixed or tilt wall mount
- Shelf sits below mount and is height adjustable to accommodate different camera sizes
- Adds zero depth to installation



FVS200™/FVS250™/FVS251™

FUSION Camera Shelf - Above

- 8", 12" or 14" (203 mm, 305 mm or 356 mm) wide camera shelf
- Compatible with any new FUSION fixed or tilt wall mount
- Shelf sits above mount and is height adjustable for different screen sizes
- Adds zero depth to installation



FVS300™/FVS350™

FUSION Camera Shelf - In Line

- 8" or 12" (203 mm or 305 mm) wide camera shelf
- Compatible with any new FUSION fixed or tilt wall mount fixed or tilt wall mount
- Shelf sits between two mount.
- Must order appropriate FCK connector kit accessory separately
- Adds zero depth to installation

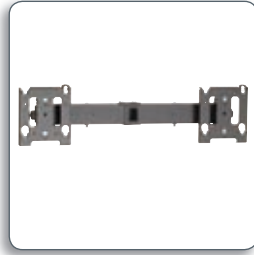




CART & STAND ACCESSORIES

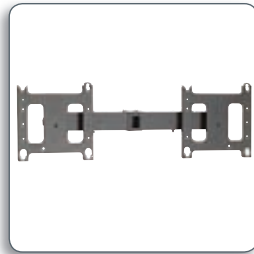
MAC722™ Dual Side-by-Side Accessory

- Adds support for 2 displays side-by-side to carts and floor stands
- Supports (2) 38" - 58" (96.5 - 147.3 cm) wide displays (must be same size)
- Weight Capacity: 125 lbs (56.7 kg) total



PAC722™ Dual Side-by-Side Accessory

- Adds support for 2 displays side-by-side to carts and floor stands
- Supports (2) 38" - 58" (96.5 - 147.3 cm) wide displays (must be same size)
- Weight Capacity: 150 lbs (68 kg) total



MAC720™ Dual Vertical Display Accessory

- Adds support for a second display to the lower extension column
- Weight Capacity: 125 lbs (56.7 kg)



PAC720™ Dual Vertical Display Accessory

- Adds support for a second display to the lower extension column
- Weight Capacity: 200 lbs (90.7 kg)



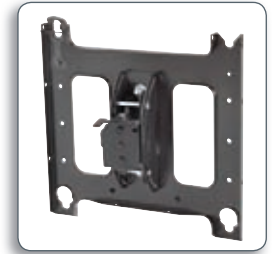
MAC790™ Display Swivel Adapter

- Adds swivel capability to carts and floor stands
- Tilt: ± 15°
- Swivel: ± 15°
- Weight Capacity: 125 lbs (56.7 kg)



PAC790™ Display Swivel Adapter

- Adds swivel capability to carts and floor stands
- Tilt: ± 15°
- Swivel: ± 15°
- Weight Capacity: 200 lbs (90.7 kg)



PAC715™/PAC716™ Video Conference Camera Shelf - Above

- 9" or 14" (229 mm or 356 mm) wide camera shelf
- Supports a video conferencing camera above or below the display
- Front/Back Extension: 2.5" (64 mm)
- Vertical Extension: 6.75" (171 mm)
- Weight Capacity: 10 lbs (4.5 kg)



PAC710™ Carts and Stands Accessory Shelf

- Supports Chief's line of flat panel floor stands and carts
- Quick installation and adjustments
- Weight Capacity: 25 lbs (11.34 kg)



PAS100™ Smoked Acrylic Accessory Shelf

- Compatible with PPC Presenter's cart
- Dimensions: (WxD) 29.5 x 18" (749 x 457 mm)
- Weight Capacity: 35 lbs (15.88 kg)



PAC717™ Literature Shelf

- Presents literature in upright position - great for rental / staging applications
- Max Literature Size: (HxWxD) 11" x 8.5" x 2" (279 x 216 x 51 mm)
- Weight Capacity: 25 lbs (11.3 kg)





CART & STAND ACCESSORIES cont.

PAC730A/B/C™ Secure Storage Shelf

- Perfect size for secure storage of DVD players, laptops, and other similar sized equipment
- Up to 3 units can be stacked vertically and bolted together
- Three keyed locking options (A/B/C)
- Max equipment size: (HxWxD) 3.5" x 17.5" x 12.0" (89 x 445 x 305 mm)
- Weight Capacity: 25 lbs (11.3 kg)



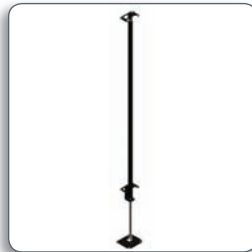
PAC735A/B/C™ Secure Storage Cabinet

- Secure storage option for rack mount equipment, PCs, codecs, and other large AV equipment
- Supports 19" (483 mm) wide rack mount equipment (up to 4 RU)
- Up to 3 units can be stacked vertically and bolted together (starting at base of cart/stand)
- Max equipment size: (HxWxD) 9" x 19" x 19" (229 x 483 x 483 mm)
- Weight Capacity: 40 lbs (18.1 kg)



PAC780/782/784™ Height Assist Accessory

- Helps to neutralize the weight of displays for easier height adjustment
- Can be added to the MFC/PFC/MF1/PF1 carts and stands
- Travel distance: up to 32" (813 mm)
- PAC780 Weight Capacity: 50-75 lbs (22.7-34 kg)
- PAC782 Weight Capacity: 75-100 lbs (34-45.4 kg)
- PAC780 Weight Capacity: 100-125 lbs (45.4-56.7 kg)



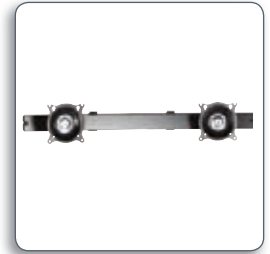
PAC775™ Cart Outdoor Casters

- Helps to reduce vibration transitted to equipment
- Weight Capacity: 200 lbs (90.7 kg)



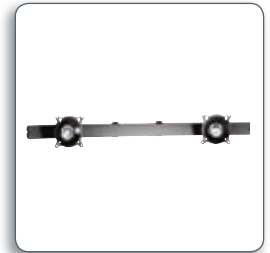
KFA220™ Dual Monitor Cart/Stand Accessory

- Accessory supports 2 monitors (up to 22.7" / 577 mm wide) side-by-side
- Two brackets included to attach multiple monitors to the cart



KFA225™ Widescreen Dual Monitor Cart/Stand Accessory

- Accessory supports 2 widescreen monitors screens (up to 30" / 762 mm wide) side-by-side
- Two brackets included to attach multiple monitors to the cart



KFA320™ Triple Monitor Cart/Stand Accessory

- Accessory supports three monitors (up to 18" / 457 mm wide) side-by-side



KFA325™ Widescreen Triple Monitor Cart/Stand Accessory

- Accessory supports three widescreen monitors (up to 25" / 635 mm wide) side-by-side

